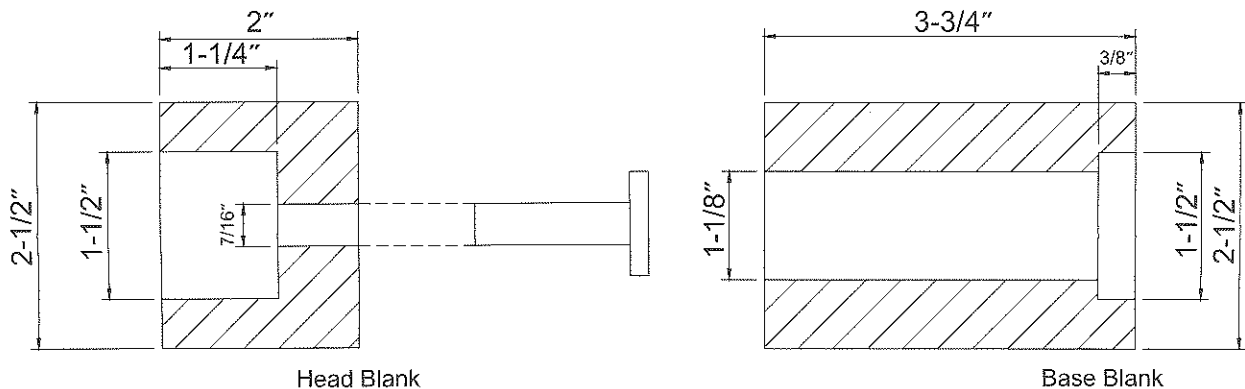


Salt Shaker & Peppermill Combo Kit

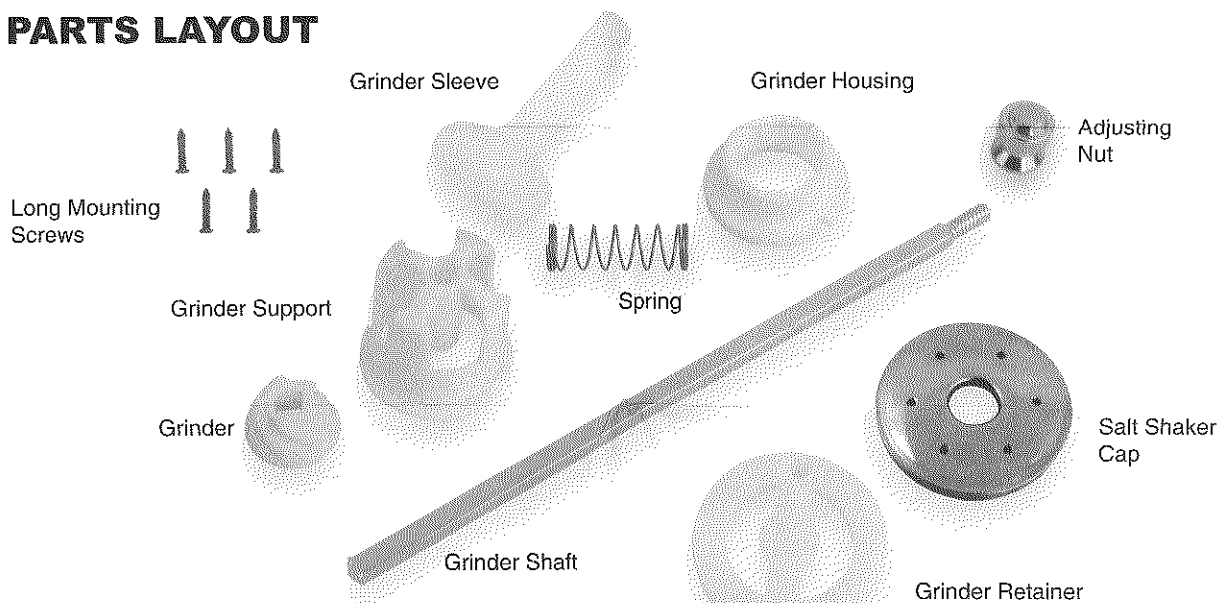
Instructions



Kit Features:

- /Overall height: 6-1/2"
- /Convenient Salt & Pepper dispenser in one piece
- /Easy to refill both Salt & Pepper
- /Ceramic Grinder Mechanism

PARTS LAYOUT



Boring the Blanks:

Base:

- /Mark the center on both ends of the blank.
- /Drill a 1-1/2" hole on each end, 3/8" deep at the base.
- /Drill a 1-1/8" hole through the entire blank, or drill half-way through and turn around and drill through from the opposite end.

Head:

- /Mark the center on both ends of the blank.
- /Drill a 1-1/2" hole, 1-1/4" deep on the top end of the blank. Check to make sure the salt plate fits into this recess.
- /Follow with a with a 7/16" diameter hole to the end.